



# FRIENDS OF ZILKER GARDEN

The Walk of Friends is already growing. Build a pathway to the future, and show your love and support of the Garden or as a tribute to a special person in your life.

## \$500-900

8 x 16  
3 lines w/  
16 larger  
characters

### I want to be a Friend of Zilker Botanical Garden.

( ) \$500- 999                      ( ) \$250-499  
( ) \$100 - 249                      ( ) \$ 50 - 99

Check payable to the Austin Area Garden Center.  
Mail to: Friends of Zilker Botanical Garden 2220 Barton Springs Road, Austin, TX. 78746

## \$250-299

4 x 16  
3 lines w/  
28 characters

Name: \_\_\_\_\_

Address: \_\_\_\_\_

Phone: \_\_\_\_\_

Email: \_\_\_\_\_

## \$100-249

4 x 8 brick  
3 lines w/  
16 characters

Desired brick inscription:

Line 1 \_\_\_\_\_

Line 2 \_\_\_\_\_

Line 3 \_\_\_\_\_

NEXT PUBLICATION: June 1, 2002  
ARTICLES DUE: May 1, 2002

*Let's hear from YOU!*

Return Service Requested

Austin Area Garden Center, Inc.  
2220 Barton Springs Road  
Austin, TX 78746

Non Profit Org.  
U.S. Postage  
**PAID**  
Permit No. 1969  
Austin, TX

# Down the Garden Path

SPRING, 2002

QUARTERLY PUBLICATION OF THE AUSTIN AREA GARDEN COUNCIL



## Zilker Garden Festival

APRIL 13 & 14 — 10am-6pm

The Festival Committee has really been busy, and this year's Festival looks great! Fabulous vendors, entertainment, tours of the newly opened Hartman Prehistoric Garden, and Green Gardening Seminars.

Take a few hours to volunteer, then bring your friends!

To volunteer, call Maurine Ward at 892-6494 or Molly Hill at 442-4706.

Entertainment lineup at publication (more to come, courtesy of Craig Nazor): Robert Skiles, jazz piano; Russell Scanlon, jazz guitar; Darin Layne and friends, jazz ensemble; Chris Vincent, classical guitar; Mario Garza, native American flute; Alyssa Allen and friends, classical Indian bamboo flute; Craig Nazor, solo piano; Mundi Ensemble, medieval music.

KLBJ-AM will be broadcasting from the site both mornings. KLBJ-AM, KGSR, and Oldies 103 are also doing fabulous free promotional spots and ticket giveaways. And watch for our color ad in the Statesman's garden section on April 13!

### GRAND OPENING!!!

A dream come true, **The Hartman Prehistoric Garden** invites you to its grand opening on Saturday, March 30 at 10 a.m. If you haven't seen it yet, it is fabulous! Just a few short years ago, it was an overgrown blank slate, hiding its treasures, the dinosaur tracks made 100 million years ago. Thanks to Claudette and David

*continued on page 2.*

## GREEN GARDENING SEMINARS

Zilker Garden Festival

SATURDAY

10:30 **Deer Resistant Plants**

Claire Smith

Murfys Landscaping

11:30 **Texas Landscape Design**

Eleanor McKinney

Landscape Architect

12:30 **Frugal Gardening: Starting Your Own Plants from Seeds**

Ron Miller Travis County Master and Cuttings Gardener

1:30 **12 Summer Proof Color Plants**

Skip Richter

Texas Cooperative Extension

*continued on page 2.*



## Zilker Botanical Garden

2220 Barton Springs Road, 78746 477-8672

[www.zilker-garden.org](http://www.zilker-garden.org)

Editor: Linda Lehmusvirta  
475-9046 wk 928-4481 hm  
5347 Westminster, 78723  
[Linda\\_Lehmusvirta@klru.pbs.org](mailto:Linda_Lehmusvirta@klru.pbs.org)

Publisher: Justine Boyer  
[jboyer@boyercreative.com](mailto:jboyer@boyercreative.com)  
Mailing List: Tomye Zettner  
PO 156, Spicewood, 78669  
[tzet@texas.net](mailto:tzet@texas.net)

Green Gardening continued from page 1.

**2:30 Right Plant for the Right Place**

Sheryl McLaughlin  
Landscape Architect

**3:30 Composting**

Bill Carter, TNRCC

**Worm Composting (kids)**

Sally Struble, TreeFolks

**SUNDAY**

**10:30 Creating a Certified Habitat**

Alice Nance  
National Wildlife Federation

**11:30 Maintaining an Austin Landscape**

Sara Twaddle  
Greater Texas Landscape

**12:30 Building Fertile Garden Soil**

John Dromgoole  
Natural Gardener

**1:30 Soil and Water Conservation**

Malcolm Beck, Gardenville

**2:30 Rainwater Harvesting**

Jess Reich, Rain Water Specialties

**3:30 10 Tremendous Natives**

Denise Delaney for Central Texas  
Lady Bird Johnson Wildflower Center

**Master Gardener Plant Clinics to be held throughout the weekend.**

Grand Opening continued from page 1.

Hartman, who got the ball rolling, and thanks to your contributions financially and in volunteer labor, the Hartman Prehistoric Garden is one of Austin's most exciting attractions. Craig's information about the plants is fascinating, and the design is delightful for children and adults. It's an achievement that deserves our applause. ■

Join the *FRIENDS* of  
Zilker Botanical Gardens

at a

# Garden Gala

**Event:** Celebration of the Walk of FRIENDS...a new pathway of engraved bricks to honor special people in our lives

**Place:** Zilker Botanical Gardens

**Date:** Sunday, April 28, 2002 from 6 p.m. - 8 p.m.

**Cost:** \$40 a person (tax-deductible)

*Enjoy signature hors d' oeuvres served  
by Austin restaurants, fine wines,  
and music throughout the gardens...  
Participate in an Art Auction to acquire  
an original artwork donated  
by renowned artist, Daryl Howard,  
framed by John Traber, Fine Art Services.*

**RSVP by: April 6, 2002**

Make checks payable to Austin Area Garden Center, Inc. (AAGC)

Mail to: The FRIENDS of Zilker Botanical Gardens

Austin Area Garden Center, 2220 Barton Springs Road

Austin, Texas 78746.

Your check is your reservation.

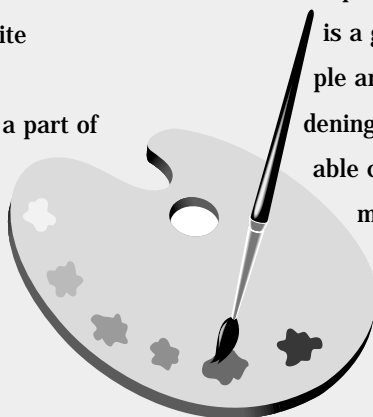
## CREATIVE OUTLET CALLING YOU!

Our newly formed Publication Committee presents a fun volunteer opportunity that you can do at home on your own schedule! We need copy writers, layout artists, graphic artists, photographers, website developers and organizers. The duties of this committee are varied and creative.

We will oversee:

- Yearbook
- Educational
- Brochures
- Materials
- Library
- Website

If you would like to be a part of this dynamic team, or if you have ideas for future projects, please contact Tomye Zettner at 264-1629 or [tzet@texas.net](mailto:tzet@texas.net).



## MAKE A DIFFERENCE!

We've had a great response to the new flyer asking for volunteers. There are many opportunities:

- Gift shop
- Garden work
- Garden greeter
- Operations

There's something for you and your expertise! Volunteering at ZBG is a great way to meet new people and learn more about gardening. And, you'll make a valuable contribution to your community by sharing your love of gardening and support of ZBG. Invite a friend to join you! ■

## HONEY BEE PLANTS

Submitted by Kim Lehman,  
*President, Austin Herb Society*

Honeybees need both nectar and pollen to maintain their hive. The nectar provides food (honey) which bees need to produce wax from a wax gland. Pollen is needed as a protein source for the bees, especially the developing bees. One way to tell if a hive is healthy is by watching the entrance. If bees are bringing in pollen you know the queen is laying eggs...and that's a good thing.

Having bees around your garden will maximize the production of seeds. It's estimated that over 50% of wild flowering plants are suffering a decreased regeneration of seeds because of the lack of pollinators.

Herbs for bees include thymes, lavender, rosemary, borage, bee balm, mints, sages, horehound, and boneset. Flowers for culinary benefit, garden color, and to attract bees include sunflowers, asters, butterfly weed, fleabane, monardas, coreopsis, bottlebrush, goldenrod, lantana, and yarrow. Trees and bushes include tallow, mesquite, cat's claw, creosote bush, yaupon, and red bud.

May your garden bee alive with buzzing bees!

Editor's note: KLRU's Central Texas Gardener features bee expert Steve Forrester on April 20 at noon and 4 p.m. (channel 18, Time Warner cable 9). ■



## PUBLICITY NOTES:

Celeste Seay has a new email address. To submit articles or calendar events to the Statesman's Saturday garden section, please send to [seayhere@yahoo.com](mailto:seayhere@yahoo.com).

For listings provided by the Austin Convention and Visitors Bureau, email to [kcook@austintexas.org](mailto:kcook@austintexas.org), fax 583-7281. Wanda has the calendar form for faxing. ■

## RECOGNITION

The City of Austin and the Parks and Recreation Department have presented the Austin Area Garden Council and Zilker Botanical Garden a plaque "For a successful, long standing partnership since 1955." We are very proud to receive this recognition for the many hours of volunteer service contributed since 1955. I know that we all look forward to another 46 years and more of collaboration with PARD towards the beauty that together we have created. ■



# EDUCATION

Molly Ogorzaly,  
*Education Coordinator*

## *Volunteer Works is now up!!!!*

**Tomye Zettner** has performed the miracle of installing this program and inputting all of the relevant information for the Education Programs volunteers. The next time you and your club members come in we'll be happy to show you how to log in and get credit for all of the time you spend helping out the community. If your club hasn't yet utilized this tool Tomye is going to need member information that includes the phone numbers of your active members. After she inputs this data you can log in on the computer in the library using the mouse and the phone number as your identifier. Those of you who have computer phobia will be astonished at how user friendly this program is and I think we're all going to be amazed at how our reported hours soar once we all start using this terrific tool!



## *It's GGGrowing!*

This year's **Get Growing and Keep Going Symposium** was another fabulous success! We had well over 100 teachers register and with all of the presenters and volunteers the number of participants came to nearly 200! Teachers came from as far away as Kansas to enjoy a day filled with productive sessions and hands-on workshops including such varied topics as grant writing, pond construction, composting and building raised beds. The Austin Area Garden Council was well represented. I had the honor of starting the day by presenting another brief excerpt from my dissertation on the myriad benefits of youth gardens and how to integrate garden activities with the academic curriculum. Many of you shared your wisdom in roles as

workshop presenters and expo participants. **Joyce McKean, Charlotte Grim, Donna Freidenreich** and **Nancy Wackenbarth** acted as Plantmobile Professors and helped engage the teachers in Supermarket Botany; **Ron Miller, Anne Gault, Betty Dunn, Jane Bramlett, Tommie Clayton, Juanell Chapman, Jennifer Neuse** and **Dolores Leeper** all represented Master Gardeners; **Bill "Treeman" Koenig, Mark Meckes** and **Bob Ogorzaly** ran a popular Bamboo Construction workshop; **Mark Meckes** and **Carole Malone** had a fabulous display at the Bamboo Society's booth, **Lydia Noble** did the same for the Herb Society; Tomye Zettner represented the Education Program utilizing the displays that Nelda Moore had so lovingly

(and artistically) updated; and **Richard Wackenbarth** and **Margie Malone** took on the important responsibility of photographing the sessions.

There were many indications that the **Get Growing Symposium** is gaining momentum. Of the 65 surveys we received, 40 teachers told us that the event exceeded their expectations and many teachers have already called to inquire what our plans are for next year. I'm delighted to report that several more clubs from the AAGC have expressed interest in participating and I hope that if your club has anything to offer school teachers that you will consider joining this important effort. Next year's symposium will be held either the first or second weekend in

# ON THE RUN

February but it's not too soon to get in on the planning...My personal goal is that Central Texas will eventually serve as a national model for the creation of teaching gardens. I only wish that **Doug Blachly** were here to see his dream becoming a reality but, come to think of it, he must be!

## *Following the Route of the Impressionists...*

The first annual volunteer garden tour is already full. Twelve of us have booked the flight and will be leaving on September 9th for 8 days to visit some of the areas immortalized on the canvasses of the French Impressionists. We'll be taking two minivans (and a hand full of walkie talkies) to travel from Giverny (to Monet's gardens) through Normandy. On the coast we'll visit Fecamp, Etretat, Honfleur, Trouville and Deauville (all favorite impressionist subjects) and then come back to Paris for three nights where we'll visit museums and gardens. If you missed the opportunity to sign up this time, never fear, as clubs can experience a "virtual tour" by requesting my talk on "Gardens in Monet's Light" and we're hoping that these exotic opportunities become a regular perk of volunteering here at the Garden Center.

## *Cretaceous Canapes????*

It's true, Virginia, that man was not around at the time of the dinosaurs (in spite of misconceptions promulgated by the Flintstones) BUT, if he was what could he have served at a Cretaceous cocktail party??? Dr. Craig Nazor and I have been having fun brainstorming on the epicurian possibilities and we've thought of hors d'oeuvres featuring ostrich satay (a.k.a. "dino bites"), pine

nuts, hearts of palm, ginkgo nuts, and fiddlehead ferns all washed down with a little primordial punch. Now we only have to dream up recipes featuring these ingredients. If any of you have creative culinary experiences with any of these unusual ingredients are invited to share your recipes...The Hartman Prehistoric Garden is set to open on March 30 and this is one more way to get in the mood! ■

## SUCCESS

To laugh often and much;  
to win the respect of intelligent  
people and affection of children;  
to earn the appreciation of  
honest critics and endure  
the betrayal of false friends;  
to appreciate beauty,  
to find the best in others;  
to leave the world a bit better,  
whether by a healthy child, a garden  
patch or a redeemed social condition;  
to know even one life has breathed  
easier because you have lived.  
This is to have succeeded.

*by Ralph waldo Emerson*

# ON THE CALENDAR

Austin Cactus and Succulent Society  
Spring show and sale  
April 6 & 7  
10 a.m. – 5 p.m.

Zilker Garden Festival  
April 13 & 14  
10 a.m. – 6 p.m.  
\$5; \$3 in advance,  
children under 12 free

Austin Herb Society  
Herbs for Family Health  
April 15 9:30 a.m. – 4:30 p.m.  
Zilker Clubhouse, 200 Clubhouse Drive  
\$35 non-members  
Registration: Kim at 627-0113 or  
misskim@flash.net

Iris Society of Austin Show  
April 20  
1 – 3 p.m.

Austin Rose Society Show  
April 21  
1 – 4 p.m.

Friends of Zilker Fund Raiser  
April 28  
6 – 8 p.m.

Municipal Art Guild  
Show and sale  
May 10 8:30 a.m. – 4 p.m.  
May 11 & 12  
10 a.m. – 5 p.m.

Austin Bonsai Society  
Show, sale, and demonstrations  
May 18 & 19  
10 a.m. – 5 p.m.  
demonstrations daily at 2 p.m.

Austin Hemerocallis Society  
Show and sale  
May 25  
1 – 5 p.m.

Men's Garden Club Flower Show  
June 1 & 2  
10 a.m. – 5 p.m.

Texas Gourd Society Show  
June 8  
9 a.m. – 5 p.m.

Austin African Violet Society  
Workshop  
June 15  
10 a.m. – 2 p.m.

Austin Pond Society  
Annual pond tour  
June 15 & 16

## AUSTIN HERB SOCIETY SPECIAL EVENTS

On Monday, April 15 from 9:30 a.m. – 4:30 p.m., the Austin Herb Society presents a special symposium, **“Herbs for Family Health with Rosemary Gladstar.”** Gladstar, world-renowned herbalist and author, will present a practical and informative workshop to learn how to create an herbal apothecary for your home. It includes kitchen medicine, backyard remedies, how to prepare herbs, and the importance of ecological herbalism.

Guests may purchase a box lunch for \$7. It will be held at the Zilker Clubhouse, 200 Clubhouse Drive (west of Mopac at Rollingwood exit). Cost: \$35 for non-members.

## A PARADE OF IRIS

Dana Loworn,  
*Historian, Iris Society of Austin*

On Saturday, April 20, the Iris Society of Austin will exhibit its annual profusion of blooms at Zilker Botanical Garden. On display in a variety of colors will be bearded irises, louisianas, and spurias. The bearded categories range from historical to space-ager. On the top table judges not only recognize the three varieties, but also the best in twelve colors from white to deep violet. Bicolors, bitones, plicatas, and amoenas warrant places on the top table, too.

For those interested in the artistic division, this year's theme is “Parade of Iris.” Classes are as follows:  
Class I—Novice, A Parade of Iris;  
Class II—Spiritual Beauty;

Advance registration recommended by calling 627-0113 or emailing misskim@flash.net.

The Austin Herb Society will also have a booth at the United Plant Savers “Planting the Future” conference on April 14 at the Lady Bird Johnson Wildflower Center. Dedicated to the cultivation and preservation of native medicinal plants, workshops include cultivation of medicinal herbs, plant walks, herbs as medicines, and sustainable herbal practices. Presenters include Rosemary Gladstar, Ellen Zimmermann (AHS), and Mark Blumenthal (American Botanical Council).

Registration after April 1 is \$55. For information, call Ellen Zimmermann at 301-0959 or Cindy at plants@plantsavers.org. ■

Class III—United We Stand (with two containers);  
Class IV—Victorious Tribute (designer's choice);  
Class V—A Celebration (a functional table for two).

Please call Pat Freeman by April 9 at 836-4679 with your design choice so she will know how many backdrops to set out before the show.

This local show follows American Iris Society guidelines. If area gardeners wish to enter identified blooms or arrangements, please be at the Garden Center between 7:30 and 9:45 a.m. Judging begins at 10:15 with the public invited from 1 – 3 p.m.

All entries must be removed by 4 p.m. so that the Rose Society can set up for their show on Sunday. ■

# Calling All Entries

Kathryn LeBlanc,  
*President, Men's Garden Club*

The Men's Garden Club will host its "perennial" Summer Flower and Vegetable Show on Saturday, June 1 from noon to 5 p.m. and Sunday, June 2 from 10 a.m. to 5 p.m. Club shows allow members to show off their gardening skills and display exhibits that include a large variety of plants they have grown in their homes and gardens. Exhibits also include preserved fruits and vegetables and dried herbs.

You can always count on a smashing display of beauty to greet you on the head table as you enter the doors to the auditorium. Every show is different and is often affected by the previous growing season. Sometimes there are pleasant surprises! We encourage all gardeners to join in the fun by entering. This show, as always, is an open show, meaning that any gardener, including amateurs, may enter. We welcome new gardeners! There are categories for novice and youth gardeners. Entries will be accepted at the Garden Center from 4 to 7 p.m. on Friday, May 31, and Saturday morning from 8 to 9:30 a.m.

Pick up a show schedule and, entry form in the Garden Center library. ■



## THANK YOU TO OUR SPONSORS!!

NEWSRADIO 590 KLBJ-AM  
MOTOROLA  
H-E-B  
KXAN-TV 36  
INSTY-PRINTS  
COCA COLA  
GIRLING HEALTH CARE NURSES  
AUSTIN AMERICAN-STATESMAN

### The Friends of Zilker Garden Iris (\$500-\$999)

Ikebana Study Group  
Heart o' Texas Orchid Society  
CL Williams  
Travis County Master Gardeners

### Geranium (\$250 - 499)

Bill Brubeck  
Barton Hills Garden Club  
Martha Davies  
Aloha H. Rhodes  
Heart of the Hills Gardeners  
Optimistic Garden Club  
West Lake Hills Garden Club  
Peggy & Kent Stewart

### Daisy (\$100-\$249)

Jay Marie Buttross  
Beth Zimpelman  
Russell Kohlert  
Marcella Wilson  
Hiroko Miller  
Zilker Garden Club  
Susan Thomas  
Sadik Mosawy  
Mildred Joseph  
Bromeliad Society of Austin  
Alys Honey  
Marilyn Sharratt  
Gloria Wilburn  
Western Trails Garden Club  
Austin Hemerocallis Society  
Cheryl Wahlgren

### Bluebonnet (\$50-99)

Bluebonnet  
Austin Newcomers Club  
Charles Schwab  
Barbara Anderson